

Siemens PLM Software

# Teamcenter Integration for International Material Data System (IMDS)

Automotive supplier collaboration for full material and substance disclosure

## Benefits

- Provides a single source for product design, including materials to support Design for Environment (DfE) initiatives
- Increases productivity with automated synchronization of material data sheet (MDS) between Teamcenter and the IMDS
- Minimizes risk of fines, restricted market access and brand damage by tracking and reporting on substances of concern used throughout the entire product
- Supports the automotive standard for supplier compliance

## Summary

Teamcenter® software solutions for sustainability and environmental compliance enable you to strengthen your compliance initiatives by facilitating an overall sustainability framework that includes the supply chain. You can meet the requirements of regulatory and industry compliance using the same PLM environment you use to accelerate product development and increase your product introduction capacity. By applying a comprehensive PLM strategy to your product development process (which includes supply chain information from the IMDS), you not only reduce the costs associated with becoming compliant and maintaining compliance, but also ensure that products are designed right the first time, maximizing your return on investment.

Regulatory directives throughout the world require automotive original equipment manufacturers (OEMs) and their suppliers to report on the content of their vehicles.

To meet this need, the International Material Data System (IMDS) was created. The IMDS is used to exchange product-related data such as material compositions within the automotive supply chain. Hewlett Packard is the global administrator of the IMDS system.

The Teamcenter substance compliance solution, from Siemens PLM Software, plays an important and growing role in helping you develop environmentally friendly products, understand and control the entire material makeup of your products and stay compliant with environmental regulations created to limit the use of hazardous substances in products.

Siemens PLM Software offers an integration between Teamcenter and Hewlett Packard's IMDS system which allows you to aggregate supplier material data sheet (MDS) information to Teamcenter from the IMDS. Supplier MDS information can also be submitted to the IMDS from Teamcenter. The synchronization and exchange of this

# Teamcenter Integration for International Material Data System (IMDS)

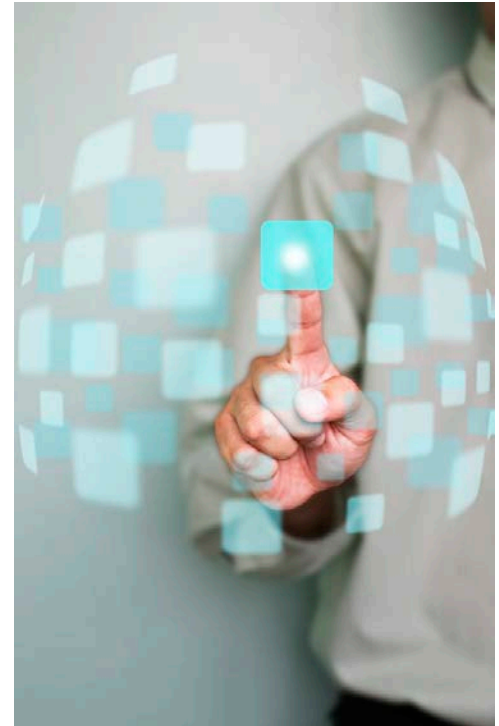
## Features

- Automatically synchronize Teamcenter MDS with the IMDS
- Create and manage supplier part materials and substances along with the engineering BOM in Teamcenter
- Suppliers can create an MDS using Teamcenter and submit to the IMDS
- Supports standard regulatory compliance grading against regional and industry-specific directives such as REACH, RoHS and GADSL
- Single intuitive user interface to manage the MDS process
- Configurable rules engine for customer-specific directives
- Easily identify where substances of concern are used in product structures

critical supply chain data ensures accuracy and helps expedite the process of full supplier material and substance disclosure for the OEM. This, in turn, increases productivity and reduces costs associated with collecting and managing the vast amounts of supplier material data needed to establish the compliance of complex products down to the substance level. The Teamcenter integration to the IMDS also supports the automotive standard for supplier compliance with regard to product-related data exchange.

The advantages of a PLM-based environmental compliance strategy to enable the exchange of automotive supply chain product material-related data include the ability to:

- Intelligently integrate material and substance information from the supply chain into the product design environment, providing a single source of accurate and compliant data to support Design for Environment (DfE) initiatives
- Increase productivity and reduce administrative overhead by automating the process of aggregating supplier information to the engineering BOM
- Improved sustainability performance to make manufacturers and products more efficient and competitive
- Make and validate materials decisions earlier in the product development process where changes are less costly
- Help manufacturers make smarter decisions that result in better, more sustainable products



## Contact

Siemens Industry Software  
 Americas +1 314-264-8499  
 Europe +44 (0) 1276 413200  
 Asia-Pacific +852 2230 3308

[www.siemens.com/plm](http://www.siemens.com/plm)

© 2014 Siemens Product Lifecycle Management Software Inc. Siemens and the Siemens logo are registered trademarks of Siemens AG. D-Cubed, Femap, Geolus, GO PLM, I-deas, Insight, JT, NX, Parasolid, Solid Edge, Teamcenter, Tecnomatix and Velocity Series are trademarks or registered trademarks of Siemens Product Lifecycle Management Software Inc. or its subsidiaries in the United States and in other countries. All other logos, trademarks, registered trademarks or service marks used herein are the property of their respective holders.  
 Y8 39801 2/14 A