

Siemens PLM Software

Teamcenter integration for AutoCAD

Capture, manage and share AutoCAD data using Teamcenter – the de facto standard for PLM deployments

Benefits

- Integrate AutoCAD files with other design data to provide a single source of product and process information to support your complete design-through-manufacturing process
- Less time spent finding the correct revisions of AutoCAD data
- Faster product change and approval processes resulting in decreased time-to-market
- Consistent work processes followed across all data formats, resulting in less errors and rework

Summary

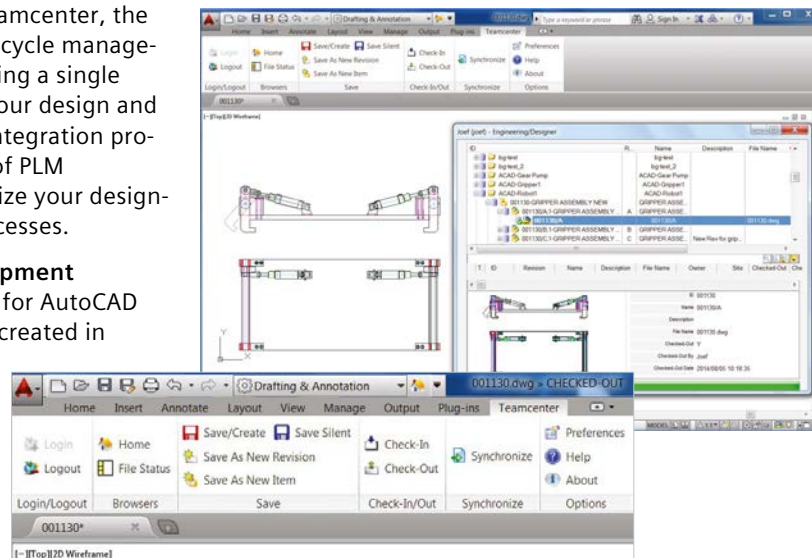
Teamcenter® software's integration for AutoCAD enables you to reduce your product development cycle times and costs by enhancing your AutoCAD environment through integration with Teamcenter, the industry leading product lifecycle management (PLM) solution. Providing a single source of product data for your design and manufacturing teams, the integration provides access to a full range of PLM capabilities to further optimize your design-through-manufacturing processes.

Streamline product development

The Teamcenter integration for AutoCAD enables design information created in AutoCAD to be captured, controlled and shared by your organization in a highly secure PLM environment with version management and access controls to ensure that

the right people get the right information at the right time.

Providing a single source of product and process data, the capabilities go beyond



Teamcenter integration for AutoCAD

Benefits *continued*

- Improved collaboration within your organization and with customers and suppliers
- Graphical browser-based user interface for convenient access into Teamcenter
- Fully integrated AutoCAD client, allowing designers to focus on design rather than data management

workgroup CAD data management. The integration is optimized for scalability across a wide area network, enabling geographically distributed design centers to connect to a single database and volume server.

Using this integration, design teams can quickly search and access AutoCAD parts, assemblies and drawings to eliminate time wasted trying to find and share design information. The integration also enables your organization to eliminate unnecessary change orders by ensuring that everyone is working from the latest design information.

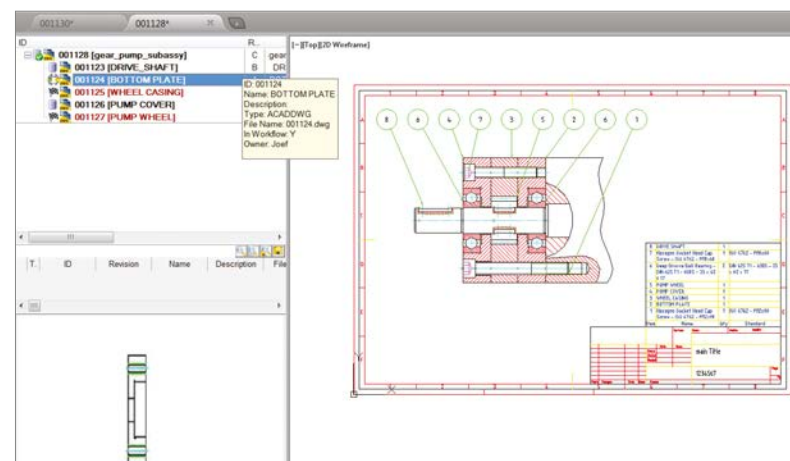
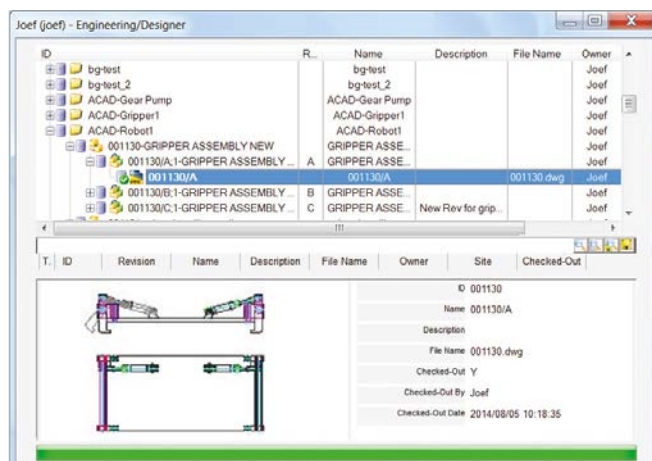
The Teamcenter integration for AutoCAD is a design-centric solution that leverages existing Teamcenter rules while enabling AutoCAD data to be incorporated into a multi-CAD environment. The user interface is graphical browser-based, which presents a familiar and easy-to-use method to locate required data.

Supported AutoCAD documents

- Drawings (.dwg)
- Xrefs and blocks
- Overlays
- DXF
- Dwf and dwfx
- PDF

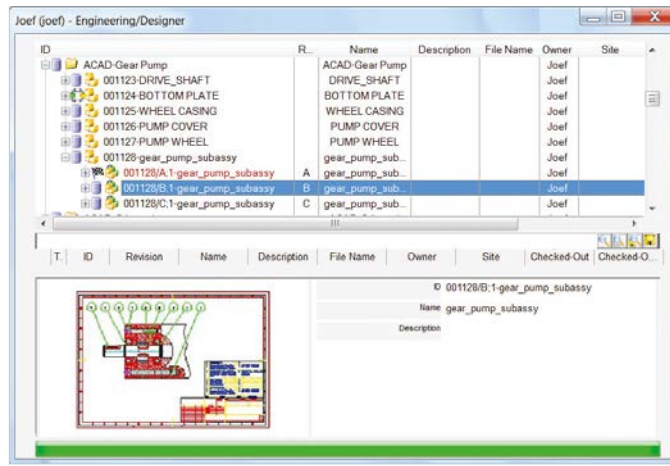
Supported functions

- Control versions and revisions of AutoCAD assemblies, parts, drawings
- Access Teamcenter from within AutoCAD; access the Teamcenter workspace and Teamcenter functions such as search, open, thumbnail preview and check-in/check-out
- Save new AutoCAD drawings under Teamcenter using Teamcenter business objects rules to assign ID, revision and name
- Place drawings from Teamcenter into active AutoCAD drawings (Xref), or as blocks into AutoCAD drawings
- Automatically read Xref links and create product structures in Teamcenter
- Automatically transfer AutoCAD title block as well as any other attribute information to/from Teamcenter
- Visualize AutoCAD drawings including multiple sheets, models, layouts and layer control
- Automatically generate and save neutral file output including PDF, DXF and dwf formats



Features

- Access Teamcenter and Teamcenter Rapid Start PLM capabilities directly from within AutoCAD
- Create and edit AutoCAD drawings and assembly relationships under Teamcenter control
- Bi-directionally transfer AutoCAD title block text to/from Teamcenter
- Automatically capture AutoCAD Xref relationships to create product structures in Teamcenter removing all file path dependencies
- Automatically create neutral file output for downstream consumers with no access to AutoCAD licenses



Teamcenter Advantage

The AutoCAD integration is supported by both Teamcenter and Teamcenter Rapid Start which power innovation and productivity by connecting people and processes with knowledge.

Teamcenter is the de facto standard for PLM deployments and is backed by Siemens PLM Software's leadership in delivery. Users of Teamcenter can easily expand the scope of their PLM implementation by taking advantage of a comprehensive portfolio of applications as well as its proven scalability in terms of performance and global implementation.

Teamcenter Rapid Start is a preconfigured deployment option for Teamcenter that manages design data, as well as everyday tasks and processes; providing an ideal entry point into the Teamcenter product line for small and medium-sized businesses.

Contact

Siemens PLM Software

Americas +1 314 264 8499

Europe +44 (0) 1276 413200

Asia-Pacific +852 2230 3308

www.siemens.com/plm

© 2014 Siemens Product Lifecycle Management Software Inc. Siemens and the Siemens logo are registered trademarks of Siemens AG. D-Cubed, Femap, Fibersim, Geolus, GO PLM, I-deas, JT, NX, Parasolid, Solid Edge, Syncrofit, Teamcenter and Tecnomatix are trademarks or registered trademarks of Siemens Product Lifecycle Management Software Inc. or its subsidiaries in the United States and in other countries. All other logos, trademarks, registered trademarks or service marks belong to their respective holders.

2841-Y7 8/14 B